

# ALCATEL

home & business phones

## ALCATEL C250



*The nice rounded shape design !*

- **Handsfree function** to share your conversations
- **20 name and number directory** to easily contact your favourite correspondents
- **Detailed call log** to check missed calls
- **Calling Line Identification** to know who is calling you\*
- Handset with **dual charging position**

### ESSENTIAL

Handsfree function

Amber backlit display

20 name and number directory

Log of the last 10 incoming calls\*

\* Subject to availability of services and subscriber options offered by telecom provider.



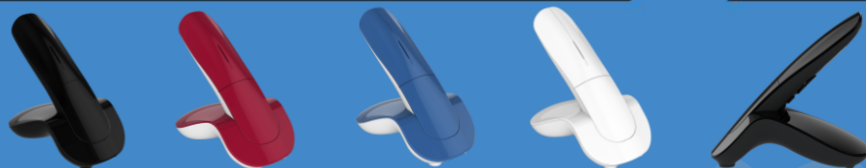
 Ecologic  
attitude

# ALCATEL

home & business phones

*The nice rounded shape design!*

## ALCATEL C250



<b>DISPLAY</b>	Display type	Alphanumeric display (14 segments)
	Backlight	Amber
	Time or handset name displayed in standby mode	✓
	Call duration display	✓
	Intuitive scrolling menu	✓
<b>SOUND</b>	Menu languages	12 languages
	Earpiece volume levels	5
	Handset ringtones	10
	Ringtone types	5 classical / 5 polyphonic
	Handset ringtone volume levels	5 + off
<b>DIRECTORY</b>	Different ringtones for external / internal calls	✓
	<b>Names and numbers</b>	20
<b>FUNCTIONS</b>	<b>Handsfree function</b>	✓
	3 direct memory keys by long press on keys 1, 2 and 3	✓
	Last number recall	5
	Automatic call answer / hang up	✓
	Keypad lock	✓
	Alarm function	✓
	Handset search (paging)	✓
	Out-of-range warning indication	✓
<b>TELECOM PROVIDER SERVICES</b>	Battery low visual warning + tone	✓
	Notification of voice messages on display*	✓
	Caller name and/or number displayed before answering and on 2nd call*	✓
	Copy caller ID entry to phonebook*	✓
	Incoming call log with date and time*	10
<b>MULTIPLE HANDSETS</b>	Notification and identification of new calls received but not answered*	✓
	Number of handsets per base	5
	Auto registration of new handsets by putting them on the main base station	✓
	Calls between handsets / call transfer	✓
	3-way conference call (2 internal + 1 external)	✓
<b>TECHNICAL SPECIFICATIONS</b>	Outdoor / indoor range (in metres)	300 / 50
	Standby / calling time (in hours)	100h / 7
	Standard 2xAAA NiMH rechargeable batteries (included)	✓
	Removable cords : phone connection / mains power	✓
	Base dimensions: L x W x H (in mm)	90 x 150 x 51
<b>REFERENCES</b>	Handset dimensions: L x W x H (in mm)	52 x 24 x 172
	Alcatel C250 EMA Black colour	3 700 60 141 2345
	Alcatel C250 EMA White colour	3 700 60 141 2604
	Alcatel C250 EMA Blue colour	3 700 60 141 2758
	Alcatel C250 EMA Carmine colour	3 700 60 141 2611
Alcatel C250 EMA Duo Black colour	3 700 60 141 2352	